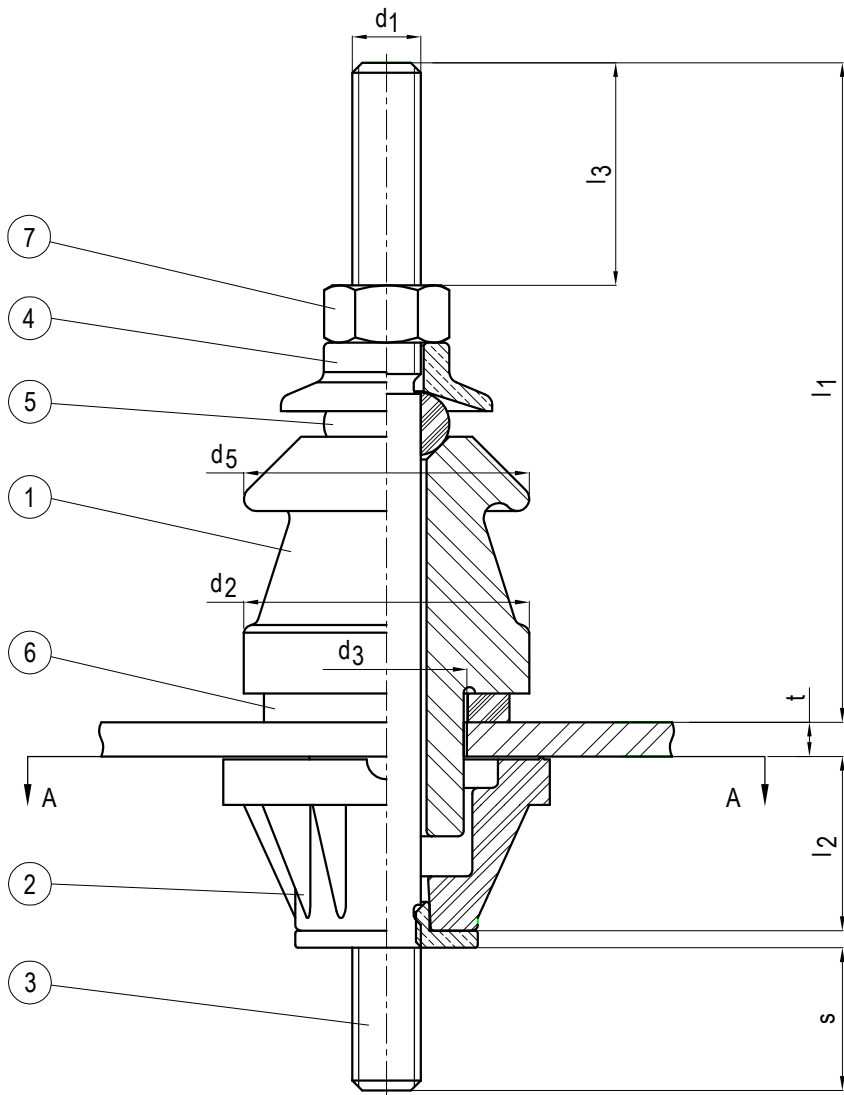
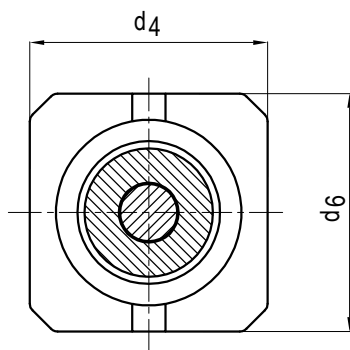




**complete bushings  
(EN types)**



Pos.	Qty.	Description
1	1	Top Insulator (Porcelain)
2	1	Bottom Insulator (PA)
3	1	Brass Stem & Bottom Part
4	1	Brass Cap "E"
5	1	Ring Gasket "J"
6	1	Flange Gasket (N)
7	1	Brass Nut ISO 4032



SECTION A-A

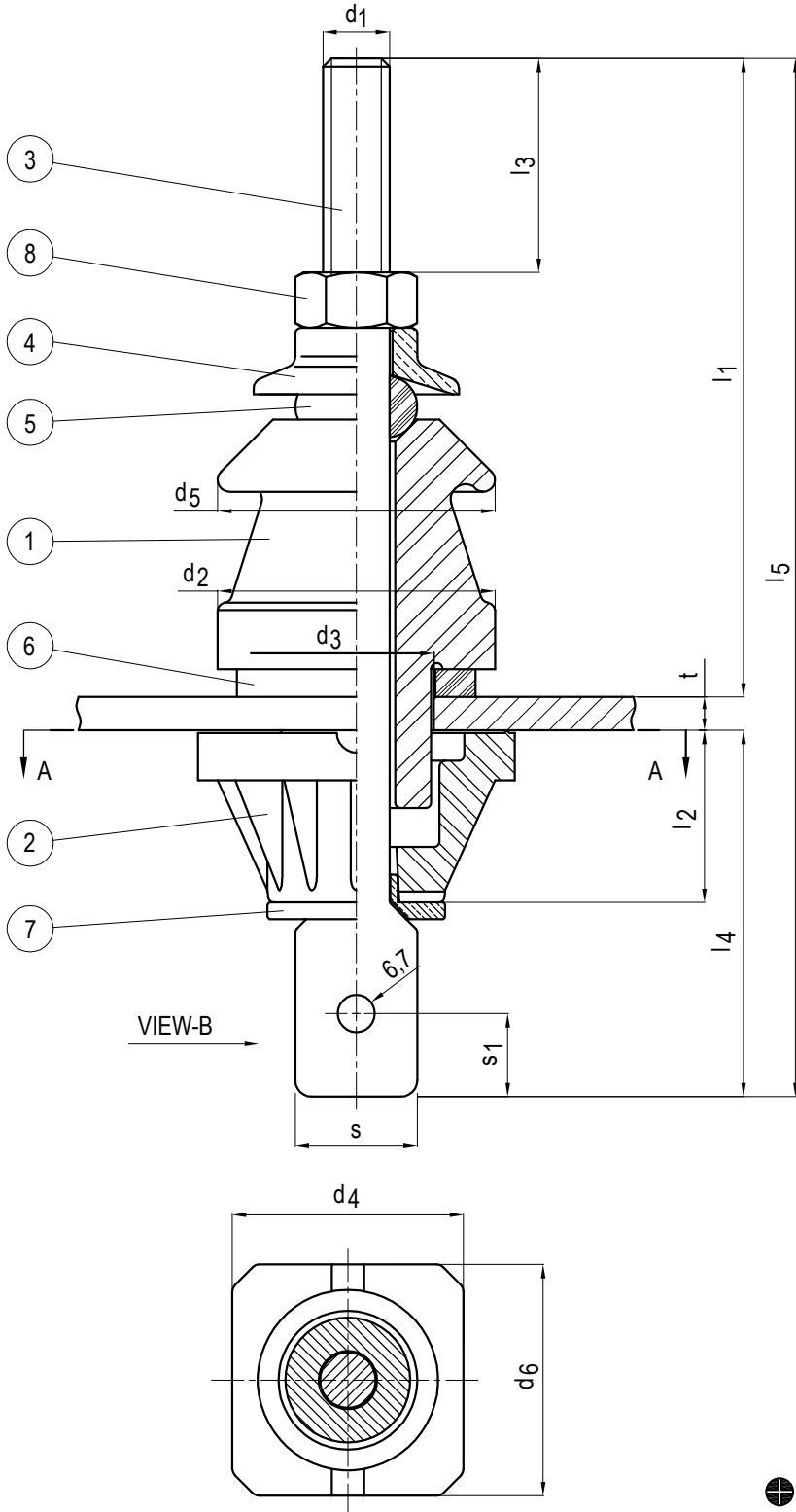
⊕ Rated current (A)

⊙ Weight (kg)

⊗ Creepage distance (mm)

All dimensions are "mm"

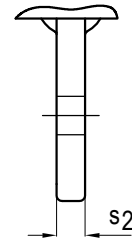
Type	⊕	l <sub>1</sub> max.	l <sub>2</sub> min.	s ±0,3	t max.	d <sub>1</sub>	d <sub>2</sub> max.	d <sub>3</sub> <sup>+2</sup> 0	d <sub>4</sub> max.	l <sub>3</sub> min.	d <sub>5</sub> max.	d <sub>6</sub>	⊗	⊙
1/250	250	115	30	25	6	M12	56	28	50	40	56	50	55	0.5
1/630	630	165	30	37	6	M20	70	45	70	65	70	70	70	1.5



Pos.	Qty.	Description
1	1	Top Insulator (Porcelain)
2	1	Bottom Insulator (PA)
3	1	Brass Stem
4	1	Brass Cap "E"
5	1	Ring Gasket "J"
6	1	Flange Gasket (N)
7	1	Brass Bottom Part
8	1	Brass Nut ISO 4032

Note: Part nr. 7 not included in 630A .

VIEW - B

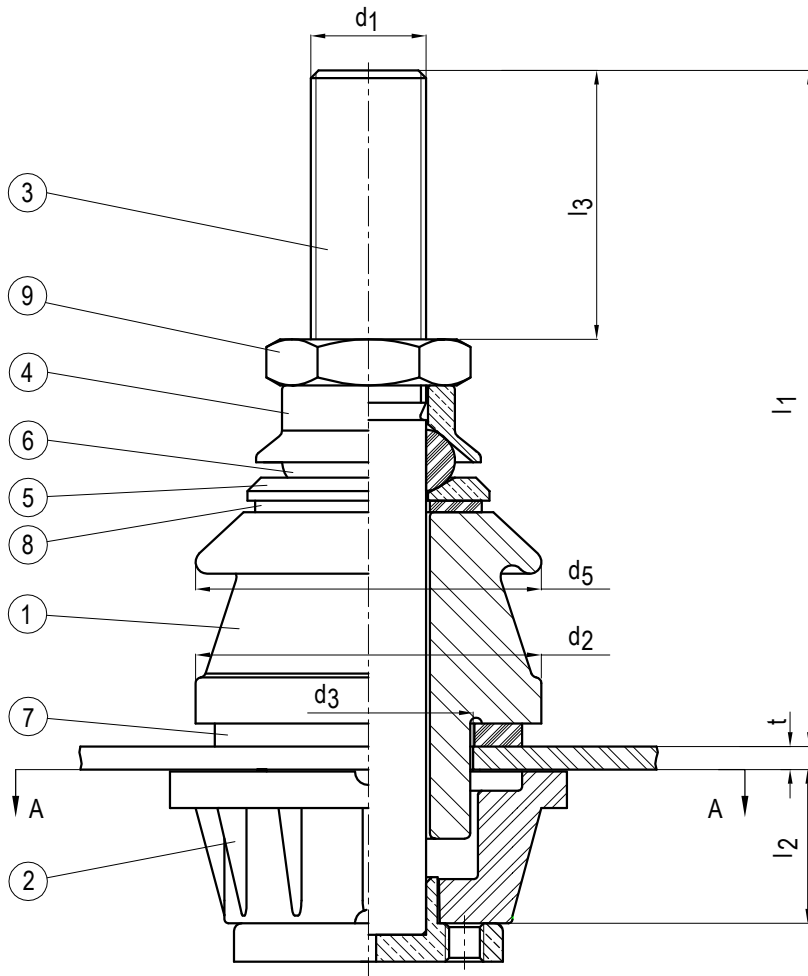


SECTION A-A

- ⊕ Rated current (A)
- ⊗ Creepage distance (mm)
- ⊙ Weight (kg)

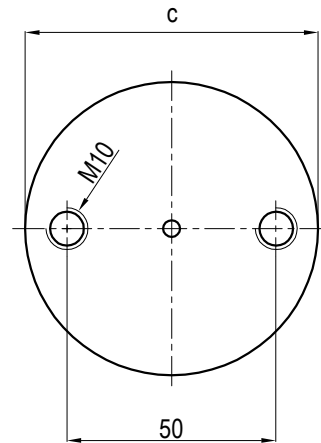
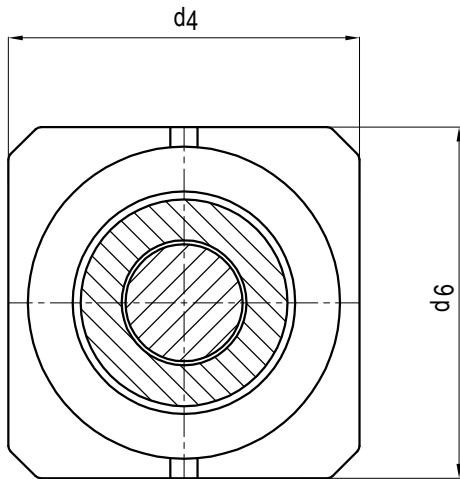
All dimensions are "mm"

Type	⊕	l1 max.	l2 min.	s ±1	t max.	d1	d2 max.	d3 <sup>+2</sup>	d4 max.	d6	l3 min.	d5 max.	s1	l4 ±1	l5 ±1	s2 ±0,5	⊗	⊙
1/250	250	115	30	22	6	M12	56	28	50	50	40	56	15	65	187	5	55	0.5
1/630	630	163	30	32	6	M20	70	45	70	70	65	70	14	67	235	9	70	1.4



Pos.	Qty.	Description
1	1	Top Insulator (Porcelain)
2	1	Bottom Insulator (PA)
3	1	Stem + Brass Bottom Part
4	1	Brass Cap "E"
5	1	Brass Washer "G"
6	1	Ring Gasket "J"
7	1	Flange Gasket (N)
8	1	Flange Gasket (M)
9	1	Brass Nut UNI 5589

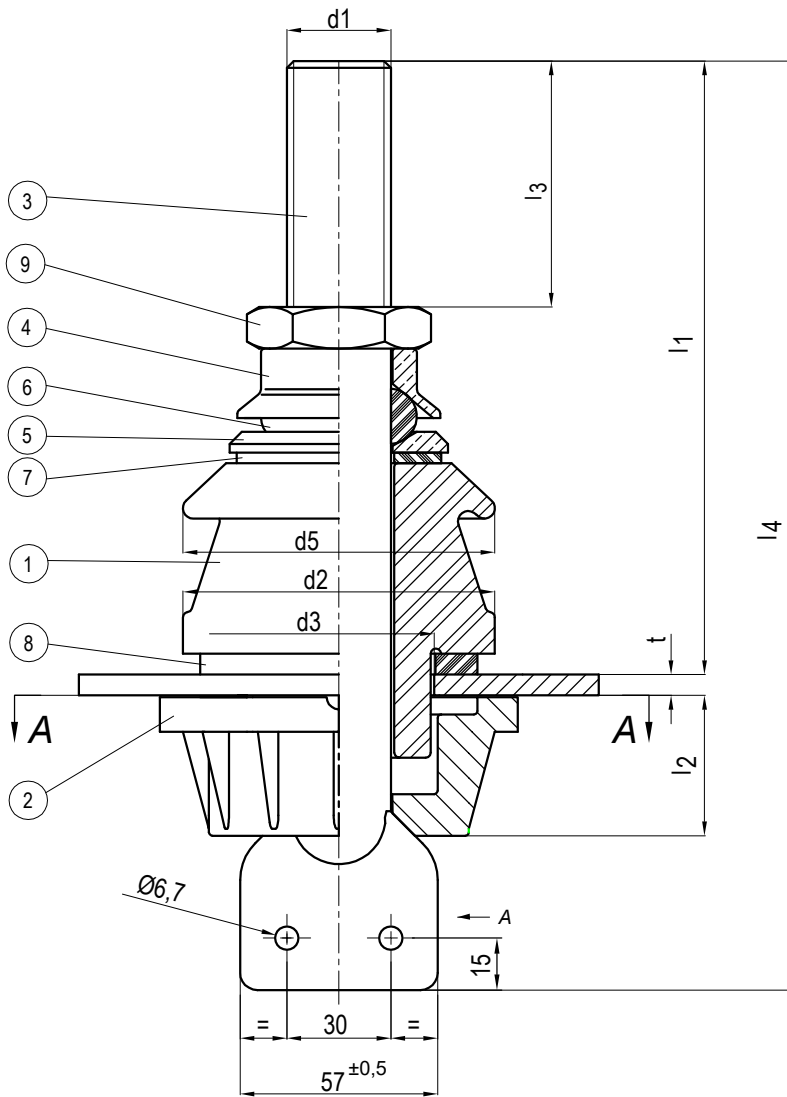
SECTION A-A



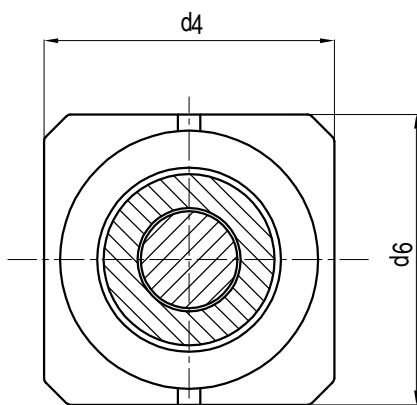
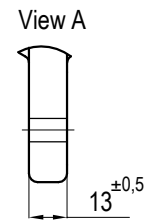
- ⊕ Rated current (A)
- ⊗ Creepage distance (mm)
- ⊙ Weight (kg)

All dimensions are "mm"

Type	⊕	l <sub>1</sub> max.	l <sub>2</sub> min.	l <sub>3</sub> min.	c	t max.	d <sub>1</sub>	d <sub>2</sub> max.	d <sub>3</sub> <sup>+2</sup> <sub>0</sub>	d <sub>4</sub> max.	d <sub>5</sub> max.	d <sub>6</sub>	⊗	⊙	Stem Material (Part Nr. 3)
1/1000	1000	175,5	40	70	70	6	M30x2	90	56	90	90	90	75	2,7	Brass
1/1250	1250	175,5	40	70	70	6	M30x2	90	56	90	90	90	75	2,8	Copper



Pos.	Qty.	Description
1	1	Top Insulator (Porcelain)
2	1	Bottom Insulator (PA)
3	1	Stem
4	1	Brass Cap "E"
5	1	Brass Washer "G"
6	1	Ring Gasket "J"
7	1	Flange Gasket (M)
8	1	Flange Gasket (N)
9	1	Brass Nut UNI 5589

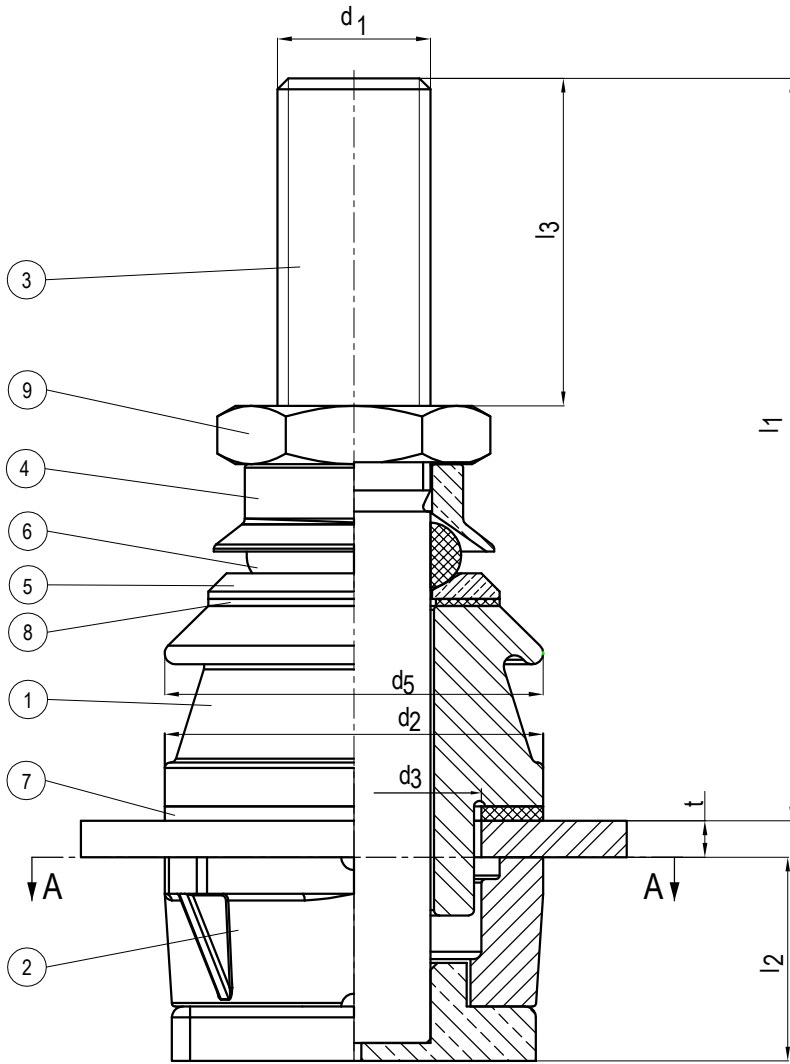


SECTION A-A

- ⊕ Rated current (A)
- ⊗ Creepage distance (mm)
- ⊘ Weight (kg)

All dimensions are "mm"

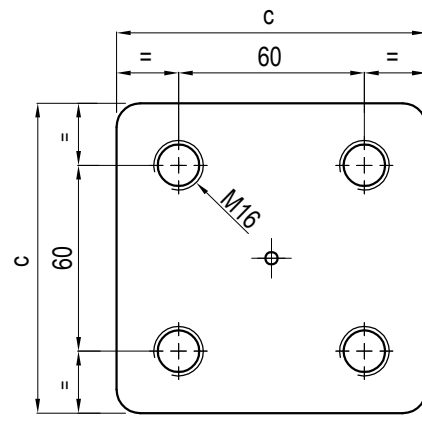
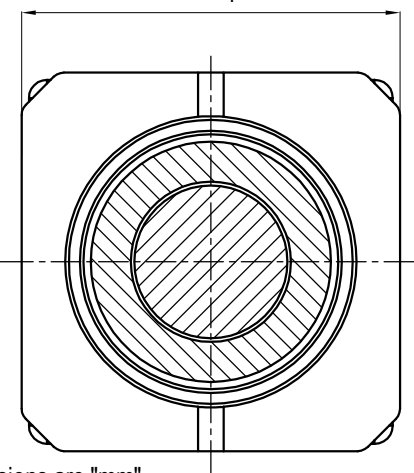
Type	⊕	l <sub>1</sub> max.	l <sub>2</sub> min.	l <sub>3</sub> min.	l <sub>4</sub>	t max.	d <sub>1</sub>	d <sub>2</sub> max.	d <sub>3</sub> <sup>+2/0</sup>	d <sub>4</sub> max.	d <sub>5</sub> max.	d <sub>6</sub>	⊗	⊘	Stem Material (Part Nr. 3)
1/1000	1000	177,5	40	70	268	6	M30x2	90	56	90	90	90	75	2,7	Brass
1/1250	2000	177,5	40	70	268	6	M30x2	90	56	90	90	90	75	2,8	Copper



Pos.	Qty.	Description
1	1	Top Insulator (Porcelain)
2	1	Bottom Insulator (PA)
3	1	Copper Stem + Brass Bottom Part
4	1	Brass Cap "E"
5	1	Brass Washer "G"
6	1	Ring Gasket "J"
7	1	Flange Gasket (N)
8	1	Flange Gasket (M)
9	1	Brass Nut UNI 5589

VIEW A  
d4

SECTION A-A

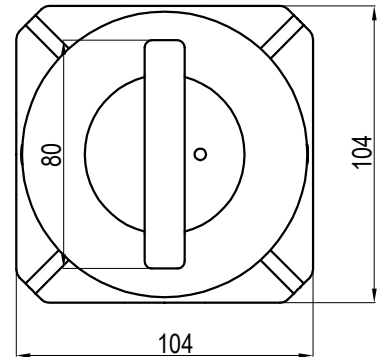
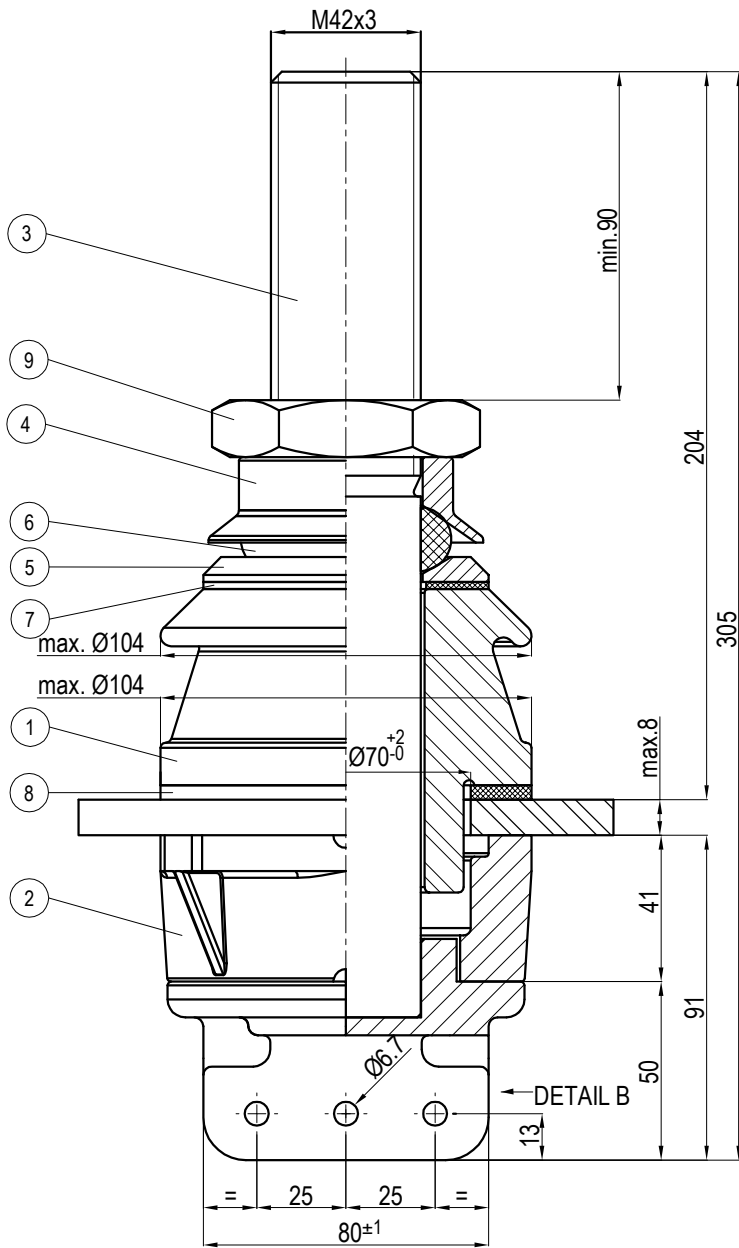


VIEW A

- ⊕ Rated current (A)
- ⊙ Weight (kg)
- ⊗ Creepage distance (mm)

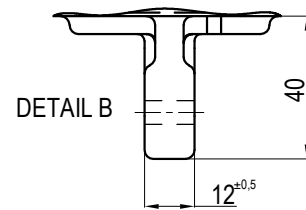
All dimensions are "mm"

Type	⊕	l1 max.	l2 min.	t max.	c	d1	d2 max.	d3 <sup>+2</sup> <sub>0</sub>	d4 max.	d6 max.	l3 min.	d5 max.	⊗	⊙
1/2000	2000	240	56	10	100	M42x3	104	70	104	104	90	104	75	6,2
1/3150	3150	250	56	10	110	M48x3	125	90	125	150	90	125	75	8,5
1/4000	4000	300	70	10	160	M55x3	160	118	166	180	110	180	85	18



VIEW C

Pos.	Qty.	Description
1	1	Top Insulator (Porcelain)
2	1	Bottom Insulator (PA)
3	1	Stem + Brass Bottom Part
4	1	Brass Cap "E"
5	1	Brass Washer "G"
6	1	Ring Gasket "J"
7	1	Flange Gasket "M"
8	1	Flange Gasket "N"
9	1	Brass Nut UNI 5589



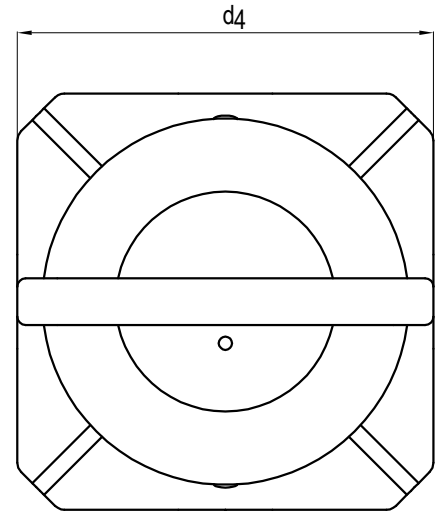
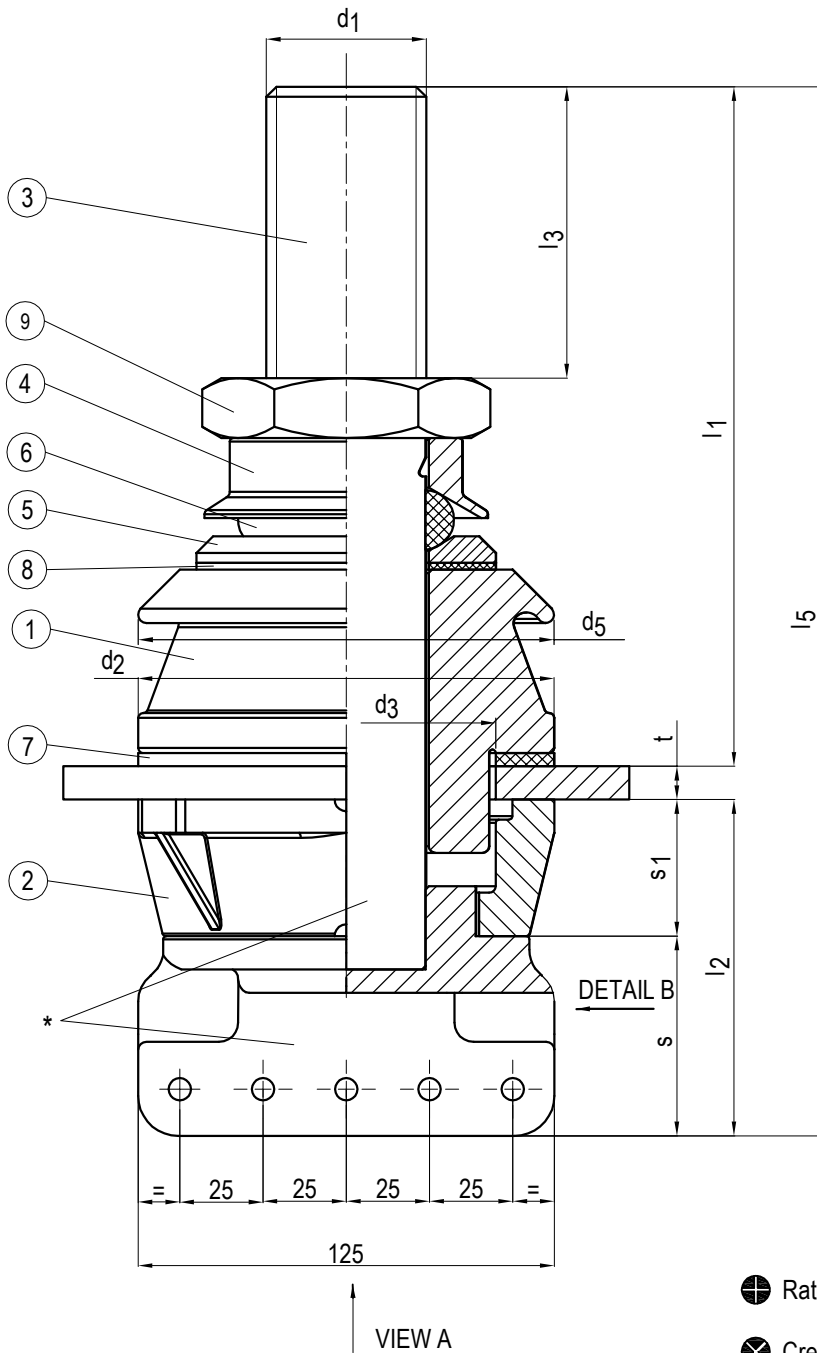
DETAIL B

- ⊕ Rated current (A)
- ⊗ Creepage distance (mm)
- ◐ Weight (kg)

All dimensions are "mm"

Type	⊕	⊗	◐	Stem Material (Part Nr. 3)
1/1800	1800	75	6,20	Brass
1/2000	2000	75	6,30	Copper

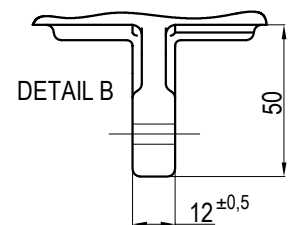
\* The stem consists of two welded parts, main part and bottom closing part. If requested, the stem can be produced as a forged single component.



VIEW A

Pos.	Qty.	Description
1	1	Top Insulator (Porcelain)
2	1	Bottom Insulator (PA)
3	1	Copper Stem + Brass Bottom Part
4	1	Brass Cap "E"
5	1	Brass Washer "G"
6	1	Ring Gasket "J"
7	1	Flange Gasket (N)
8	1	Flange Gasket (M)
9	1	Brass Nut UNI 5589

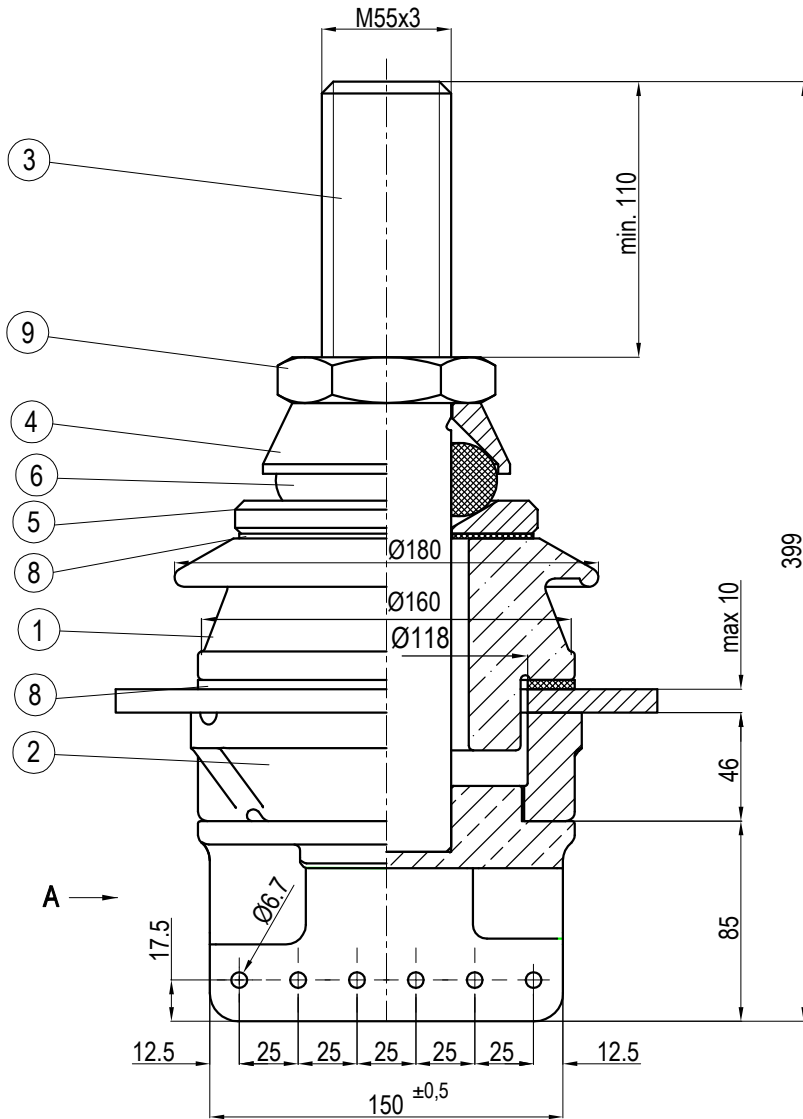
- ⊕ Rated current (A)
- ⊗ Creepage distance (mm)
- ⊙ Weight (kg)



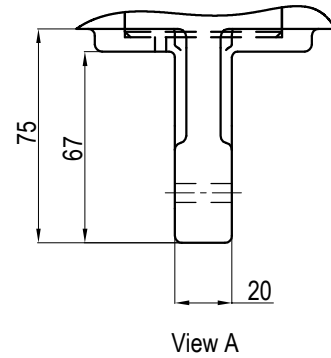
All dimensions are "mm"

Type	⊕	l <sub>1</sub> max.	l <sub>2</sub> min.	t max.	s	d <sub>1</sub>	d <sub>2</sub> max.	d <sub>3</sub> <sup>+2/0</sup>	d <sub>4</sub> max.	s <sub>1</sub>	l <sub>3</sub> min.	l <sub>5</sub>	d <sub>5</sub> max.	⊗	⊙
1/2500	2500	250	101	10	60	M48x3	125	90	125	41	90	315	125	75	8,4
1/3150	3150	250	101	10	60	M48x3	125	90	125	41	90	315	125	75	8,6

\* The stem consists of two welded parts, main part and bottom closing part. If requested, the stem can be produced as a forged single component.



Pos.	Qty.	Description
1	1	Top Insulator (Porcelain)
2	1	Bottom Insulator (PA)
3	1	Copper Stem + Brass Bottom Part
4	1	Brass Cap "E"
5	1	Brass Washer "G"
6	1	Ring Gasket "J"
7	1	Flange Gasket (M)
8	1	Flange Gasket (N)
9	1	Brass Nut UNI 5589



- ⊕ Rated current (A)
- ⊗ Creepage distance (mm)
- ⊙ Weight (kg)

All dimensions are "mm"

Type	⊕	⊗	⊙
1/4000	4000	85	15,5

# **TE TAMAM ELEKTRİK**



## **TAMAM Elektrik Sanayi ve Ticaret A.S.**

Tepeoren ITOSB Mah. 9. Sokak No. 20, Tuzla - İstanbul / TÜRKİYE  
Tel : +90 - 216 - 504 17 66 Fax : +90 - 216 - 515 64 18  
Email : [info@tamamelektrik.com.tr](mailto:info@tamamelektrik.com.tr) Website : [www.tamamelektrik.com.tr](http://www.tamamelektrik.com.tr)